

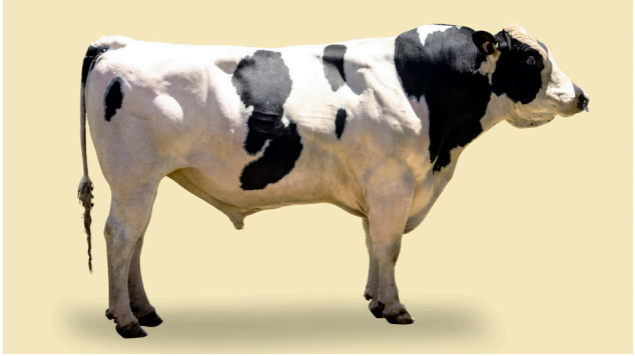
MEANDER OL ANDROID-ET S2F

BREED: F16

A1A1

NZ AB CODE: 118524

BREEDER: R & A Bruin



Android

PRODUCTION

BW (\$)	BW Rel (%)	Protein (kg)	Protein (%)
285	81	40	3.8
Fat (kg)	Fat (%)	Milk (ltrs)	# of Dtrs
41	4.6	1014	83

MANAGEMENT & HEALTH

Liveweight BV	Fertility BV	Somatic Cell BV	Functional Survival BV	
76	3.8	-0.3	2.4	
Hfr CD	Cow CD	Gest Length BV	BCS BV	SCS
1.3	-0.7	-4.8	0.21	S-

TOP BREEDING VALUES

MANAGEMENT	BV	BA	-1	-0.5	0	0.5	1
Adaptability Milking	0.47	0.20	SLOWLY				QUICKLY
Shed Temperament	0.47	0.20	NERVOUS				PLACID
Milking Speed	0.25	0.04	SLOW				FAST
Overall Farmer Opinion	0.62	0.28	UNDESIRABLE				DESIRABLE

CONFORMATION

	BV	BA				
Stature	1.12	0.98	SMALL			TALL
Dairy Capacity	0.38	0.16	FRAIL			CAPACIOUS
Rump Angle	-0.43	-0.02	HIGH PINS			SLOPING
Rump Width	0.28	0.43	NARROW			WIDE
Legs	-0.18	-0.11	STRAIGHT			CURVED
Udder Support	0.60	0.50	WEAK			STRONG
Front Udder	0.53	0.37	LOOSE			STRONG
Rear Udder	0.44	0.37	LOW			HIGH
Front Teat	-0.12	0.17	WIDE			CLOSE
Rear Teat	-0.05	0.40	WIDE			CLOSE
Teat Length	0.00	-0.16	SHORT			LONG
Udder Overall	0.49	0.48	UNDESIRABLE			DESIRABLE
Dairy Conformation	0.42	0.31	UNDESIRABLE			DESIRABLE

PEDIGREE

Sire OAKLINE DI LEGACY S2F
 Dam MEANDER FMI APRIL S2F
 MGSire FARSIDE M ILLUSTRIOUS S3F
 MGSISire O-BEE MANFRED JUSTICE-ET